



jordan fishwick

11 Kingsbury Drive, Regents Park, SK9
Guide Price £670,000

Kingsbury Drive WILMSLOW

Guide Price £670,000




NO ONWARD CHAIN. Occupying a pleasant position amongst the prestigious Regents Park development, this lovely four bedroom detached family home is presented to a high standard throughout with well proportioned accommodation. There is a generous southerly facing rear garden and a good sized front driveway leading to the integral garage. Inside, the accommodation comprises briefly: entrance hallway, cloakroom/wc, lounge with double doors opening into the dining room, conservatory, dining kitchen and utility room. To the first floor there is a master bedroom with an en suite shower room, three further double bedrooms and a family bathroom. The property is warmed by gas central heating throughout, with uPVC double glazing also installed. Internal inspection of this fine home is highly recommended.

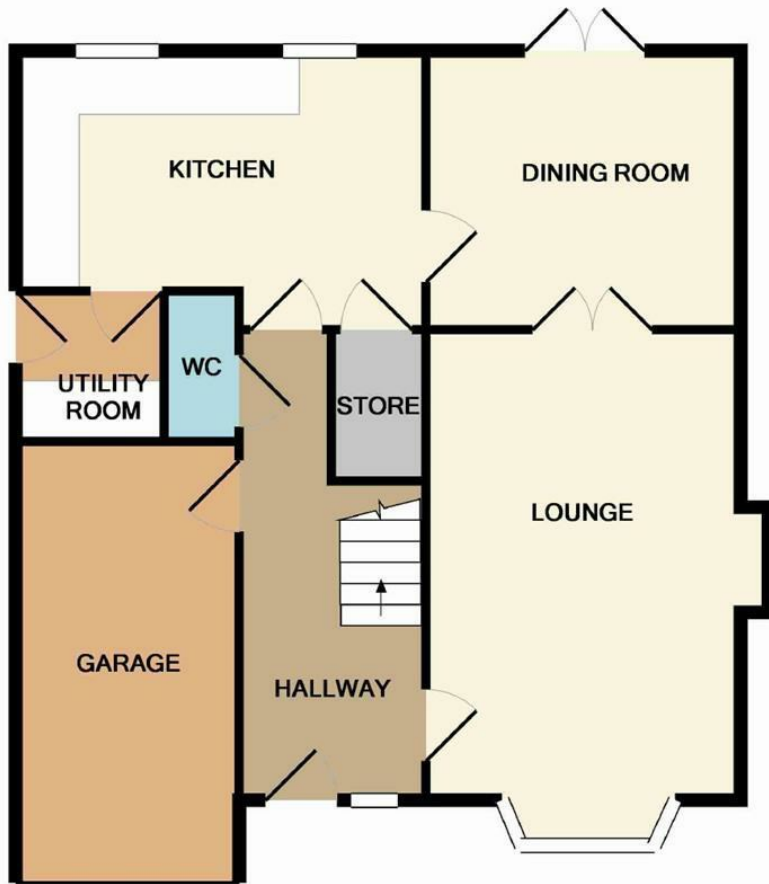


- Four Bedrooms
- Off road parking
- Popular Regents Park development
- Integral Garage
- South facing rear garden
- No onward chain
- Conservatory
- Viewing recommended

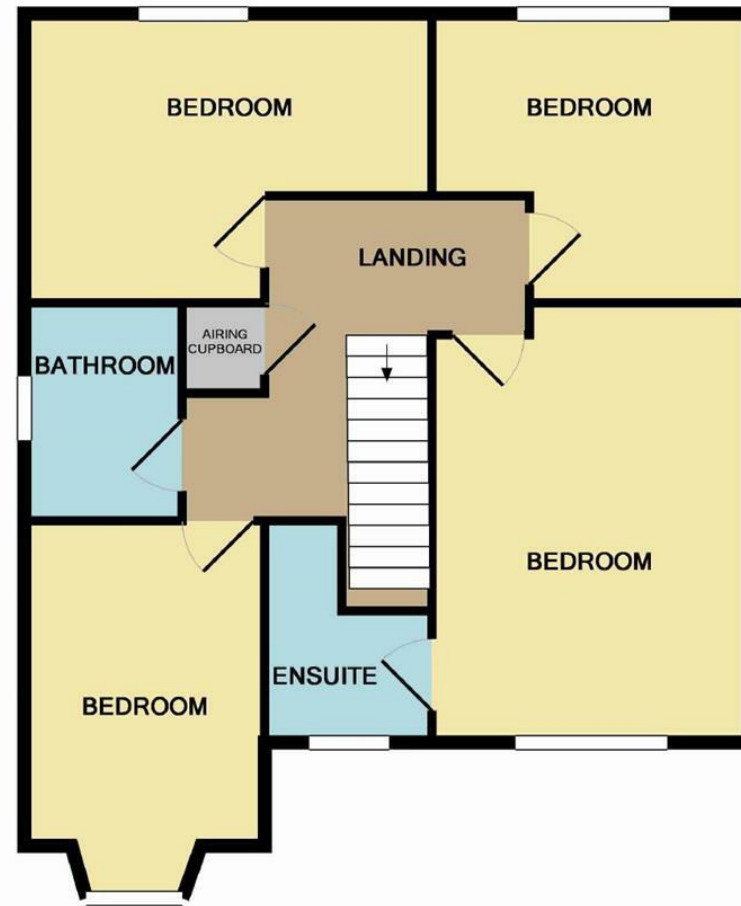


Energy Efficiency Rating		
	Current	Potential
Very energy efficient - lower running costs		
(92 plus) A		
(81-91) B		82
(69-80) C	71	
(55-68) D		
(39-54) E		
(21-38) F		
(1-20) G		
Not energy efficient - higher running costs		
England & Wales	EU Directive 2002/91/EC 	





GROUND FLOOR



1ST FLOOR

Whilst every attempt has been made to ensure the accuracy of the floor plan contained here, measurements of doors, windows, rooms and any other items are approximate and no responsibility is taken for any error, omission, or mis-statement. This plan is for illustrative purposes only and should be used as such by any prospective purchaser. The services, systems and appliances shown have not been tested and no guarantee as to their operability or efficiency can be given
 Made with Metropix ©2012



These particulars are believed to be accurate but they are not guaranteed and do not form a contract. Neither Jordan Fishwick nor the vendor or lessor accept any responsibility in respect of these particulars, which are not intended to be statements or representations of fact and any intending purchaser or lessee must satisfy himself by inspection or otherwise as to the correctness of each of the statements contained in these particulars. Any floorplans on this brochure are for illustrative purposes only and are not necessarily to scale.

Offices at: Chorlton, Didsbury, Disley, Hale, Glossop, Macclesfield, Manchester Deansgate, Manchester Whitworth Street, New Mills, Sale, Wilmslow and Withington

36-38 Alderley Road, Wilmslow SK91JX
01625 532000

wilmslow@jordanfishwick.co.uk
 www.jordanfishwick.co.uk